

a	b	c
d	e	f

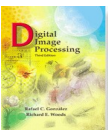
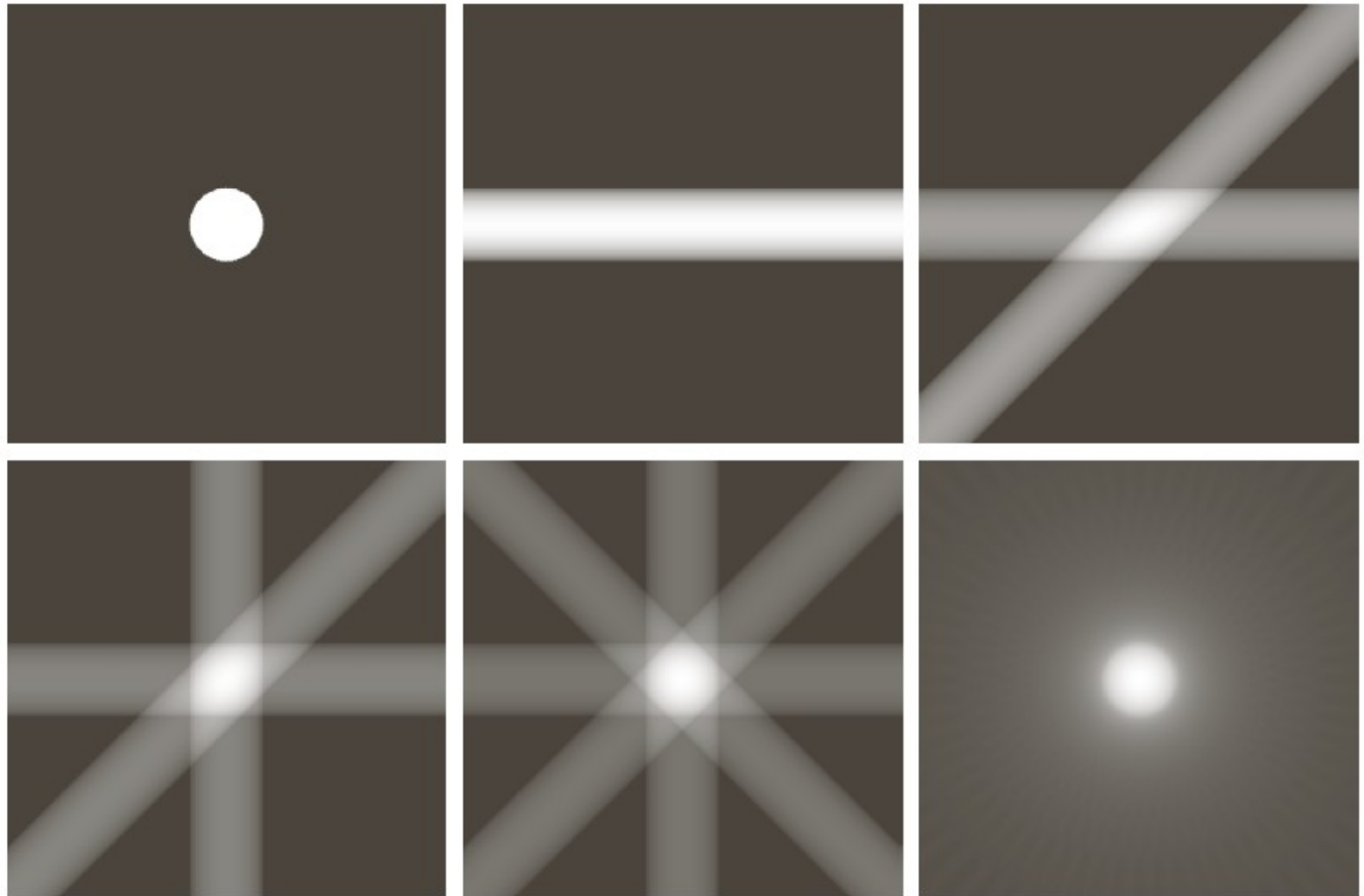
FIGURE 5.33

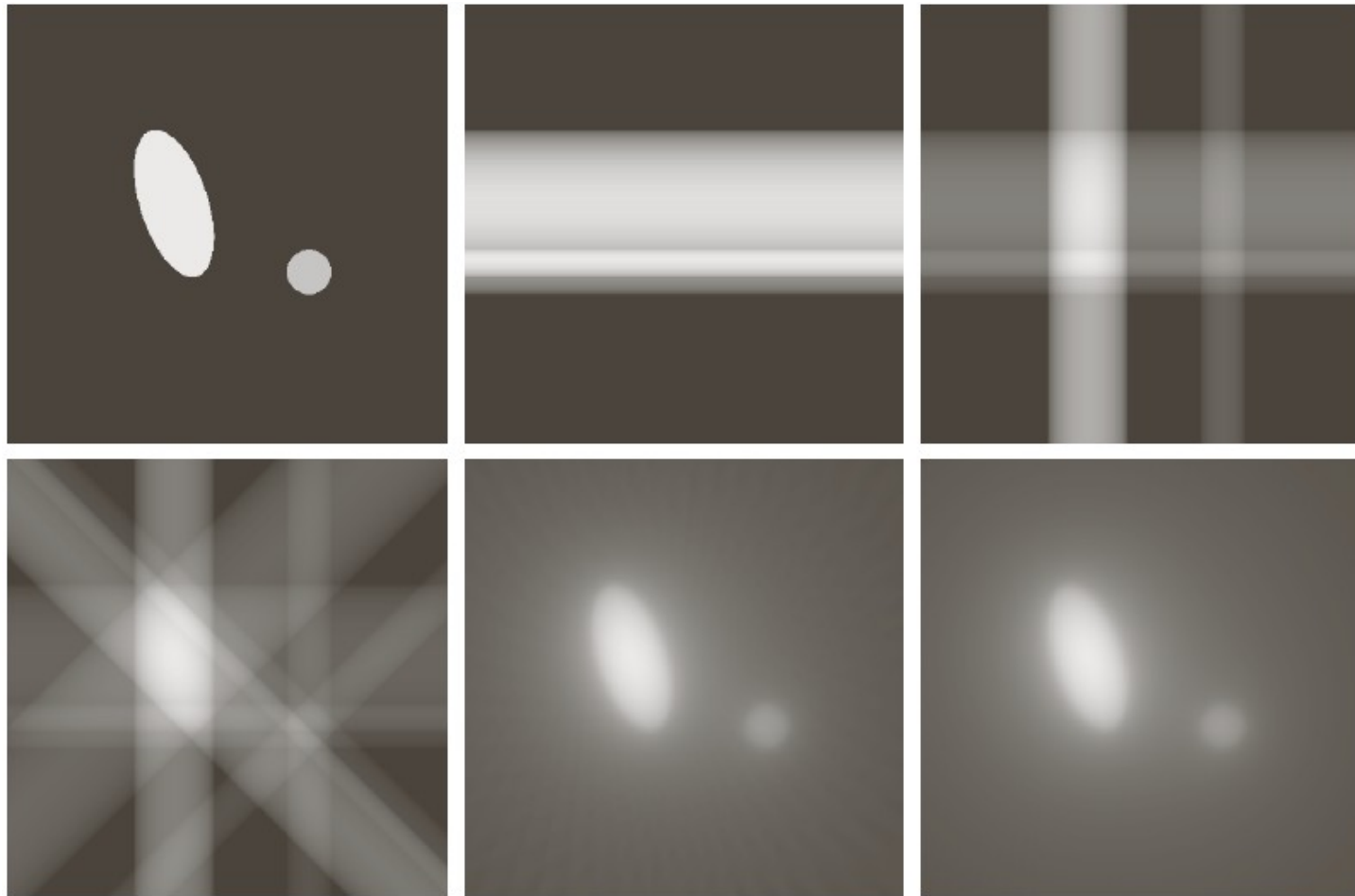
(a) Same as Fig. 5.32(a).

(b)–(e)

Reconstruction using 1, 2, 3, and 4 backprojections 45° apart.

(f) Reconstruction with 32 backprojections 5.625° apart (note the blurring).



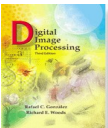
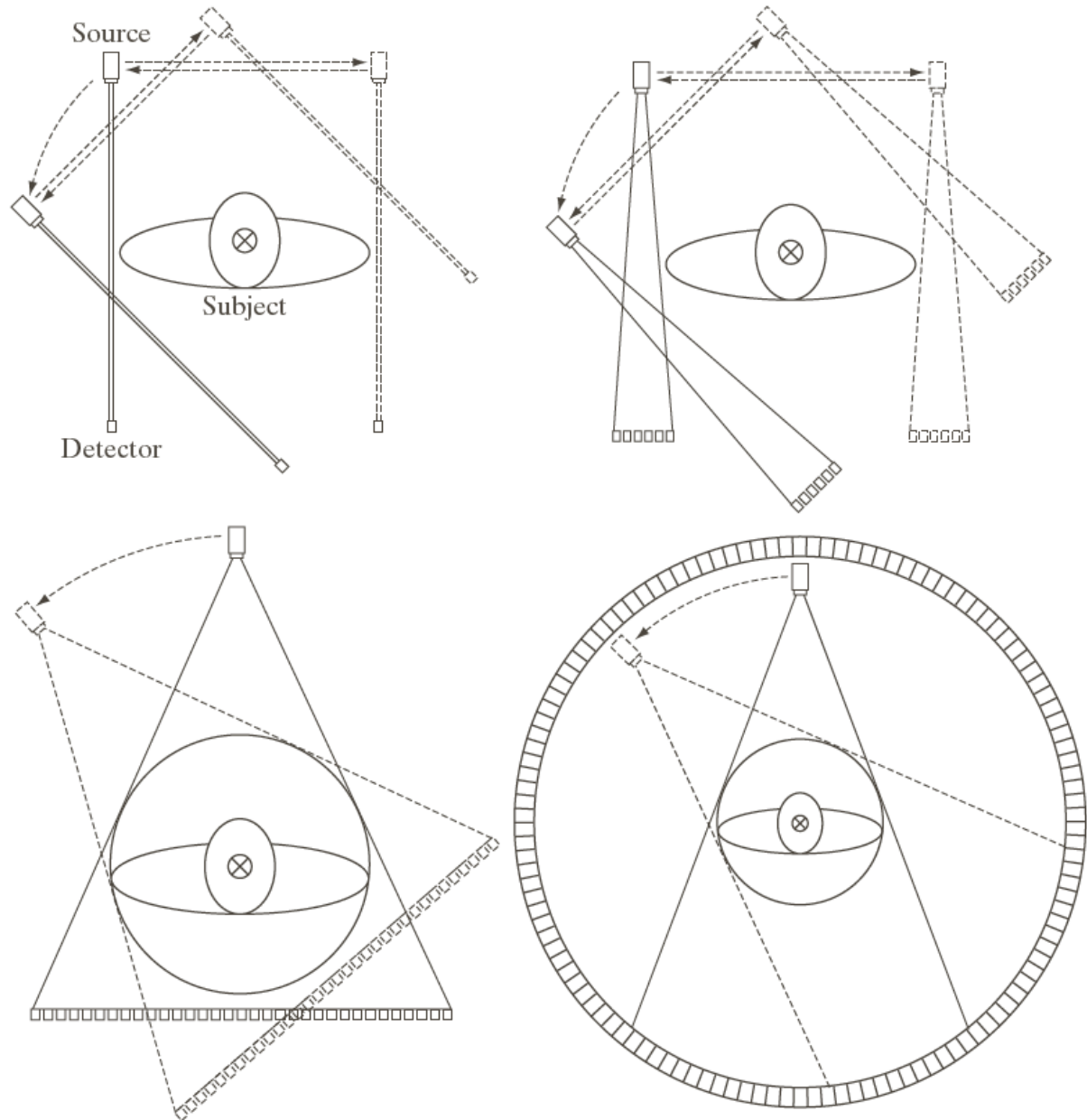


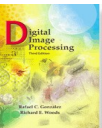
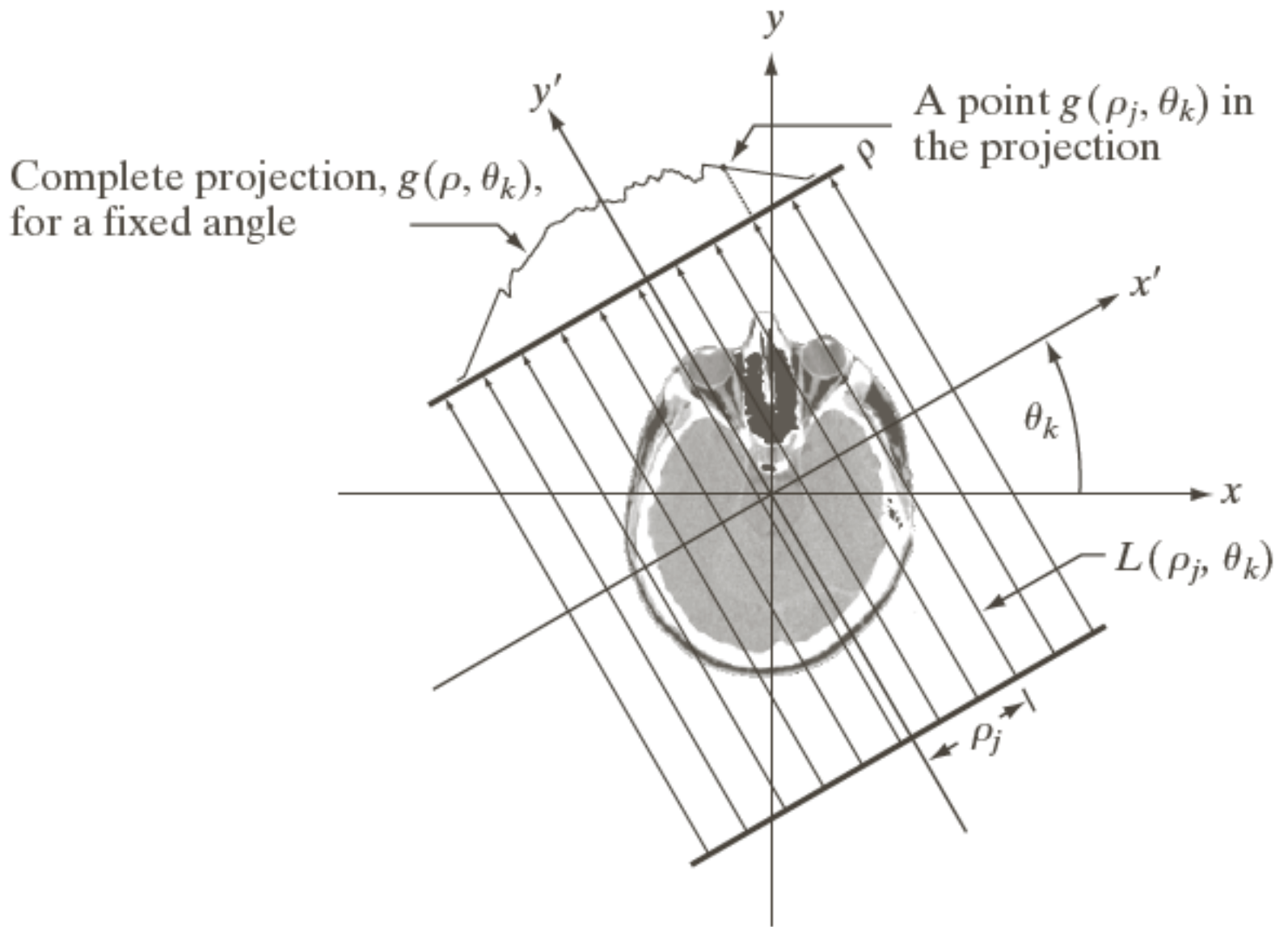
a	b	c
d	e	f

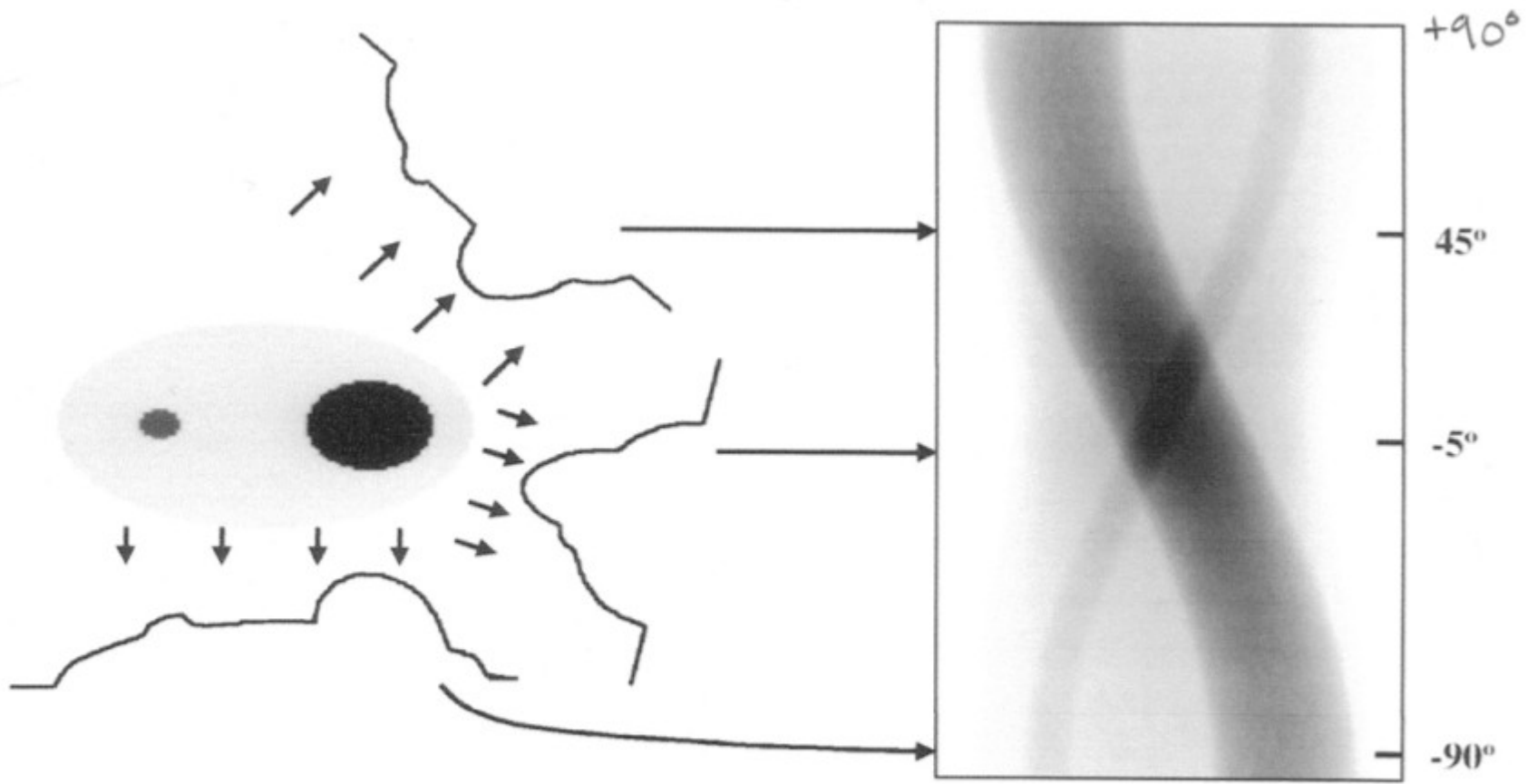
FIGURE 5.34 (a) A region with two objects. (b)–(d) Reconstruction using 1, 2, and 4 backprojections 45° apart. (e) Reconstruction with 32 backprojections 5.625° apart. (f) Reconstruction with 64 backprojections 2.8125° apart.

a	b
c	d

FIGURE 5.35 Four generations of CT scanners. The dotted arrow lines indicate incremental linear motion. The dotted arrow arcs indicate incremental rotation. The cross-mark on the subject's head indicates linear motion perpendicular to the plane of the paper. The double arrows in (a) and (b) indicate that the source/detector unit is translated and then brought back into its original position.







{ JOURNAL OF NUCLEAR MEDICINE TECHNOLOGY }

